

# The Brighton

# The Avalon Collection

*Engineered homes built magnificently, promptly, affordably.*

Multifamily

2 Bedrooms / 1.5 Baths

(each unit)

27'-6" x 40'-0"

First Floor Square Footage: 1100 s. f.

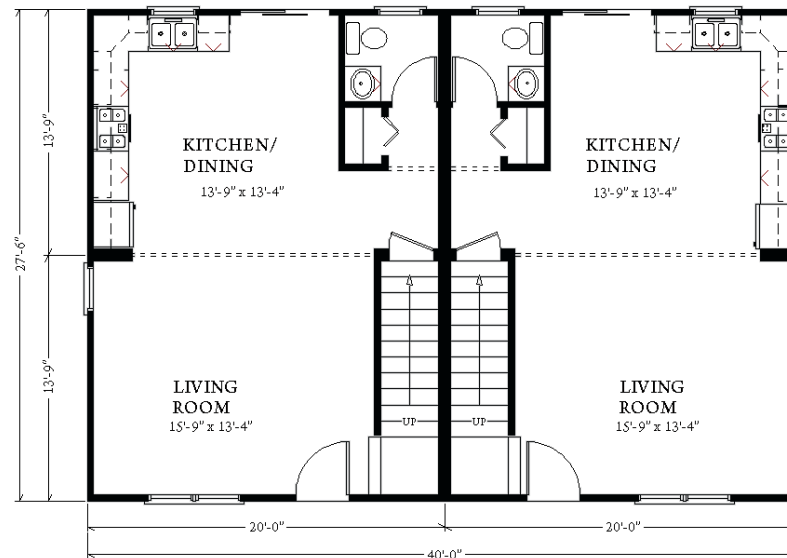
Second Floor: 1100 s. f.

Total Square Footage: 2200 square feet

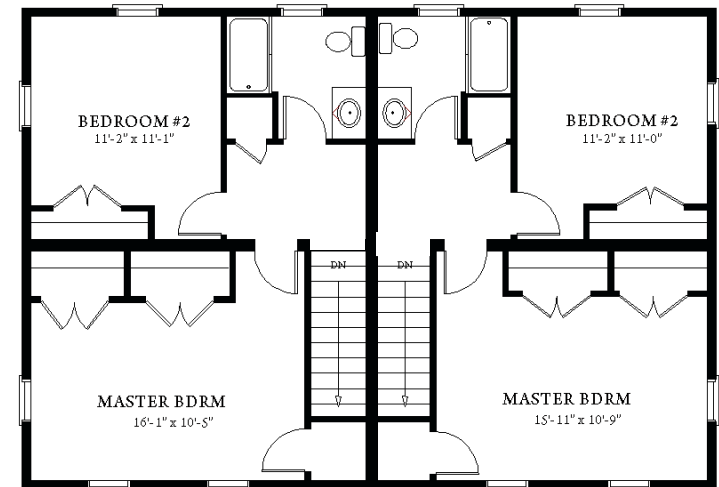
Optional Front Porch as Shown



The Brighton is a two family design, which offers two bedrooms and one and a half bathrooms. The living space includes a large eat-in kitchen and living room.



1st Floor



2nd Floor



3 Porter Street, Suit 201  
Stoughton, Ma 02072  
Phone: 781-344-4875  
Fax: 781-341-8321

Info@avalonbuildingsystems.com  
www.avalonbuildingsystems.com